

**PANTHER INTERSTATE PIPELINE ENERGY, LLC**

**PROPOSED REMOVAL AND ABANDONMENT  
16" GAS PIPELINE (SEG #3493)  
BLOCK 71 TO 20  
HIGH ISLAND AREA  
GULF OF MEXICO**

Geodetic Datum: NAD27  
Projection: TEXAS SOUTH CENTRAL  
Grid Units: US SURVEY FEET

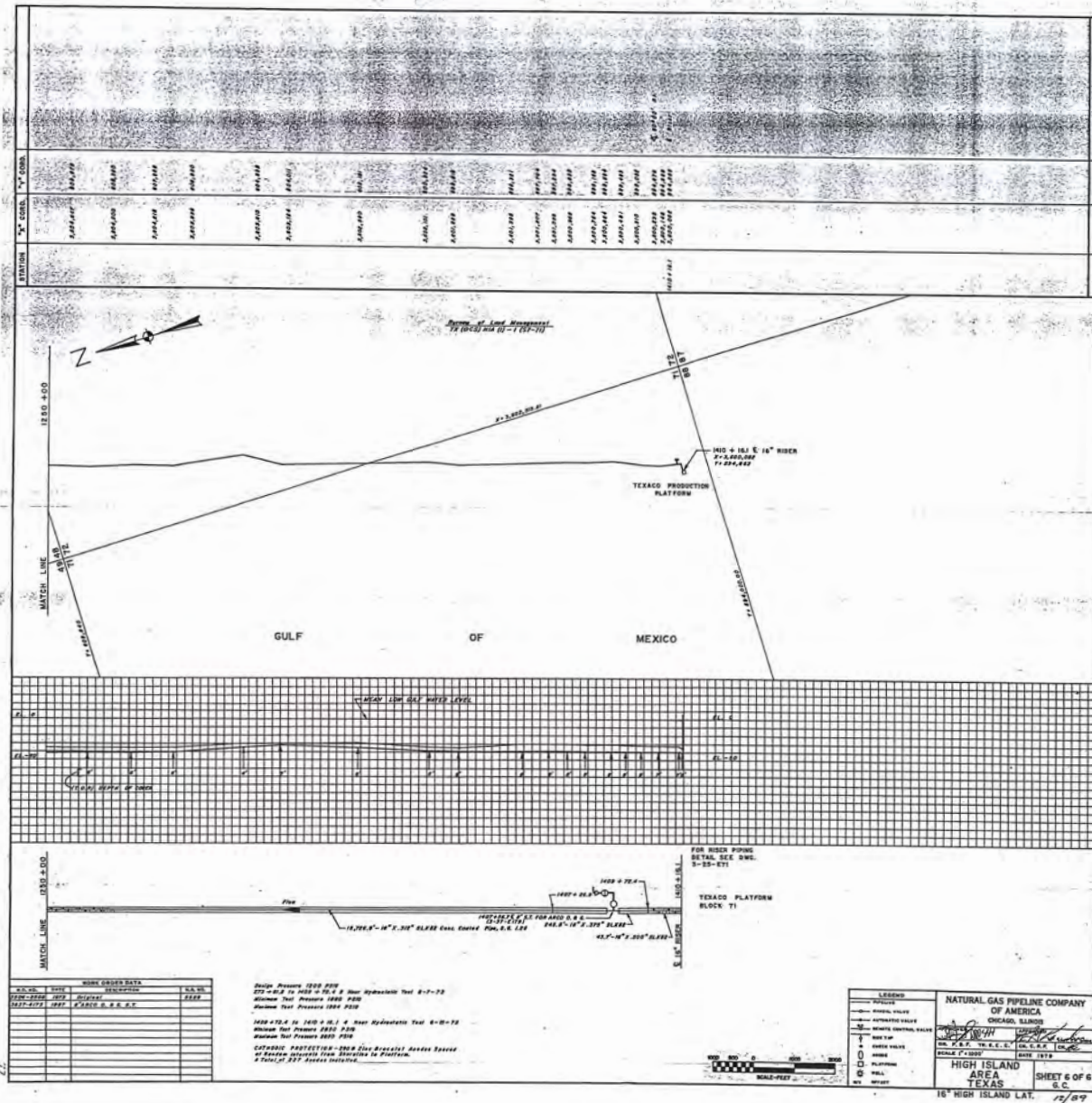
**FUGRO** FUGRO USA MARINE, INC.  
6100 Hillcroft Ave.  
Houston, Texas 77081  
(713) 346-3700

SCALE 0 30,000'  
FEET

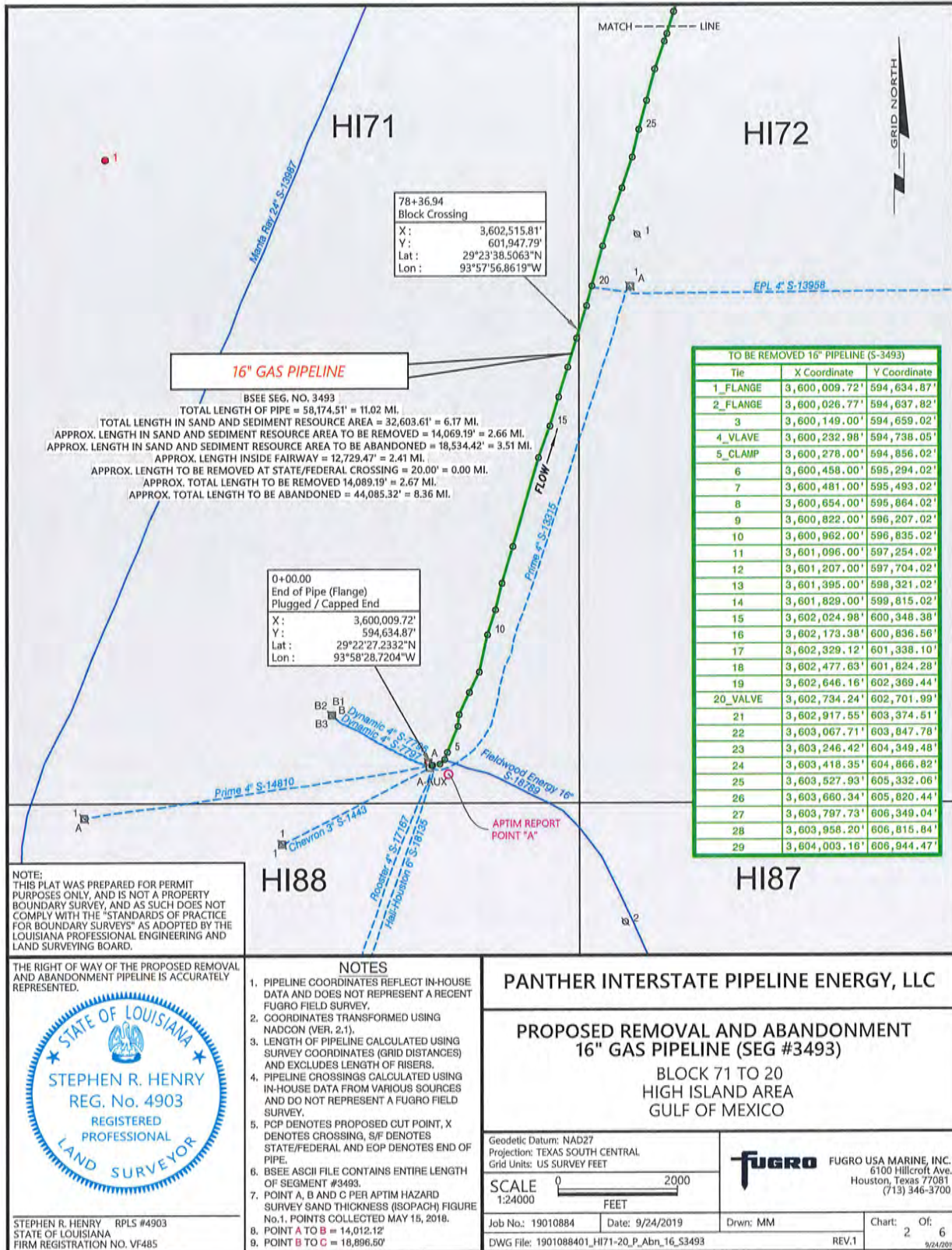
Job No: 19010884 Date: 9/24/2019 Drwn: MM Chart: 1 Of: 6  
DWG File: 1901088401\_HI71-20\_Vicinity REV.1 9/25/2019







OCT 03 2019



78+36.94  
Block Crossing  
X: 3,602,515.81'  
Y: 601,947.79'  
Lat: 29°23'38.5063"N  
Lon: 93°57'56.8619"W

**16" GAS PIPELINE**

BSEE SEG. NO. 3493  
TOTAL LENGTH OF PIPE = 58,174.51' = 11.02 MI.  
TOTAL LENGTH IN SAND AND SEDIMENT RESOURCE AREA = 32,603.61' = 6.17 MI.  
APPROX. LENGTH IN SAND AND SEDIMENT RESOURCE AREA TO BE REMOVED = 14,069.19' = 2.66 MI.  
APPROX. LENGTH IN SAND AND SEDIMENT RESOURCE AREA TO BE ABANDONED = 18,534.42' = 3.51 MI.  
APPROX. LENGTH INSIDE FAIRWAY = 12,729.47' = 2.41 MI.  
APPROX. LENGTH TO BE REMOVED AT STATE/FEDERAL CROSSING = 20.00' = 0.00 MI.  
APPROX. TOTAL LENGTH TO BE REMOVED 14,089.19' = 2.67 MI.  
APPROX. TOTAL LENGTH TO BE ABANDONED = 44,085.32' = 8.36 MI.

0+00.00  
End of Pipe (Flange)  
Plugged / Capped End  
X: 3,600,009.72'  
Y: 594,634.87'  
Lat: 29°22'27.2332"N  
Lon: 93°58'28.7204"W

TO BE REMOVED 16" PIPELINE (S-3493)		
Tie	X Coordinate	Y Coordinate
1_FLANGE	3,600,009.72'	594,634.87'
2_FLANGE	3,600,026.77'	594,637.82'
3	3,600,149.00'	594,659.02'
4_VALVE	3,600,232.98'	594,738.05'
5_CLAMP	3,600,278.00'	594,856.02'
6	3,600,458.00'	595,294.02'
7	3,600,481.00'	595,493.02'
8	3,600,654.00'	595,864.02'
9	3,600,822.00'	596,207.02'
10	3,600,962.00'	596,835.02'
11	3,601,096.00'	597,254.02'
12	3,601,207.00'	597,704.02'
13	3,601,395.00'	598,321.02'
14	3,601,829.00'	599,815.02'
15	3,602,024.98'	600,348.38'
16	3,602,173.38'	600,836.56'
17	3,602,329.12'	601,338.10'
18	3,602,477.63'	601,824.28'
19	3,602,646.16'	602,369.44'
20_VALVE	3,602,734.24'	602,701.99'
21	3,602,917.55'	603,374.51'
22	3,603,067.71'	603,847.78'
23	3,603,246.42'	604,349.48'
24	3,603,418.35'	604,866.82'
25	3,603,527.93'	605,332.06'
26	3,603,660.34'	605,820.44'
27	3,603,787.73'	606,349.04'
28	3,603,956.20'	606,815.84'
29	3,604,003.16'	606,944.47'

NOTE:  
THIS PLAT WAS PREPARED FOR PERMIT PURPOSES ONLY, AND IS NOT A PROPERTY BOUNDARY SURVEY, AND AS SUCH DOES NOT COMPLY WITH THE "STANDARDS OF PRACTICE FOR BOUNDARY SURVEYS" AS ADOPTED BY THE LOUISIANA PROFESSIONAL ENGINEERING AND LAND SURVEYING BOARD.

THE RIGHT OF WAY OF THE PROPOSED REMOVAL AND ABANDONMENT PIPELINE IS ACCURATELY REPRESENTED.



STEPHEN R. HENRY RPLS #4903  
STATE OF LOUISIANA  
FIRM REGISTRATION NO. VF485

- NOTES**
- PIPELINE COORDINATES REFLECT IN-HOUSE DATA AND DOES NOT REPRESENT A RECENT FUGRO FIELD SURVEY.
  - COORDINATES TRANSFORMED USING NADCON (VER. 2.1).
  - LENGTH OF PIPELINE CALCULATED USING SURVEY COORDINATES (GRID DISTANCES) AND EXCLUDES LENGTH OF RISERS.
  - PIPELINE CROSSINGS CALCULATED USING IN-HOUSE DATA FROM VARIOUS SOURCES AND DO NOT REPRESENT A FUGRO FIELD SURVEY.
  - PCP DENOTES PROPOSED CUT POINT, X DENOTES CROSSING, S/F DENOTES STATE/FEDERAL AND EOP DENOTES END OF PIPE.
  - BSEE ASCII FILE CONTAINS ENTIRE LENGTH OF SEGMENT #3493.
  - POINT A, B AND C PER APTIM HAZARD SURVEY SAND THICKNESS (ISOPACH) FIGURE No.1. POINTS COLLECTED MAY 15, 2018.
  - POINT A TO B = 14,012.12'
  - POINT B TO C = 18,896.50'

**PANTHER INTERSTATE PIPELINE ENERGY, LLC**

**PROPOSED REMOVAL AND ABANDONMENT  
16" GAS PIPELINE (SEG #3493)**

BLOCK 71 TO 20  
HIGH ISLAND AREA  
GULF OF MEXICO

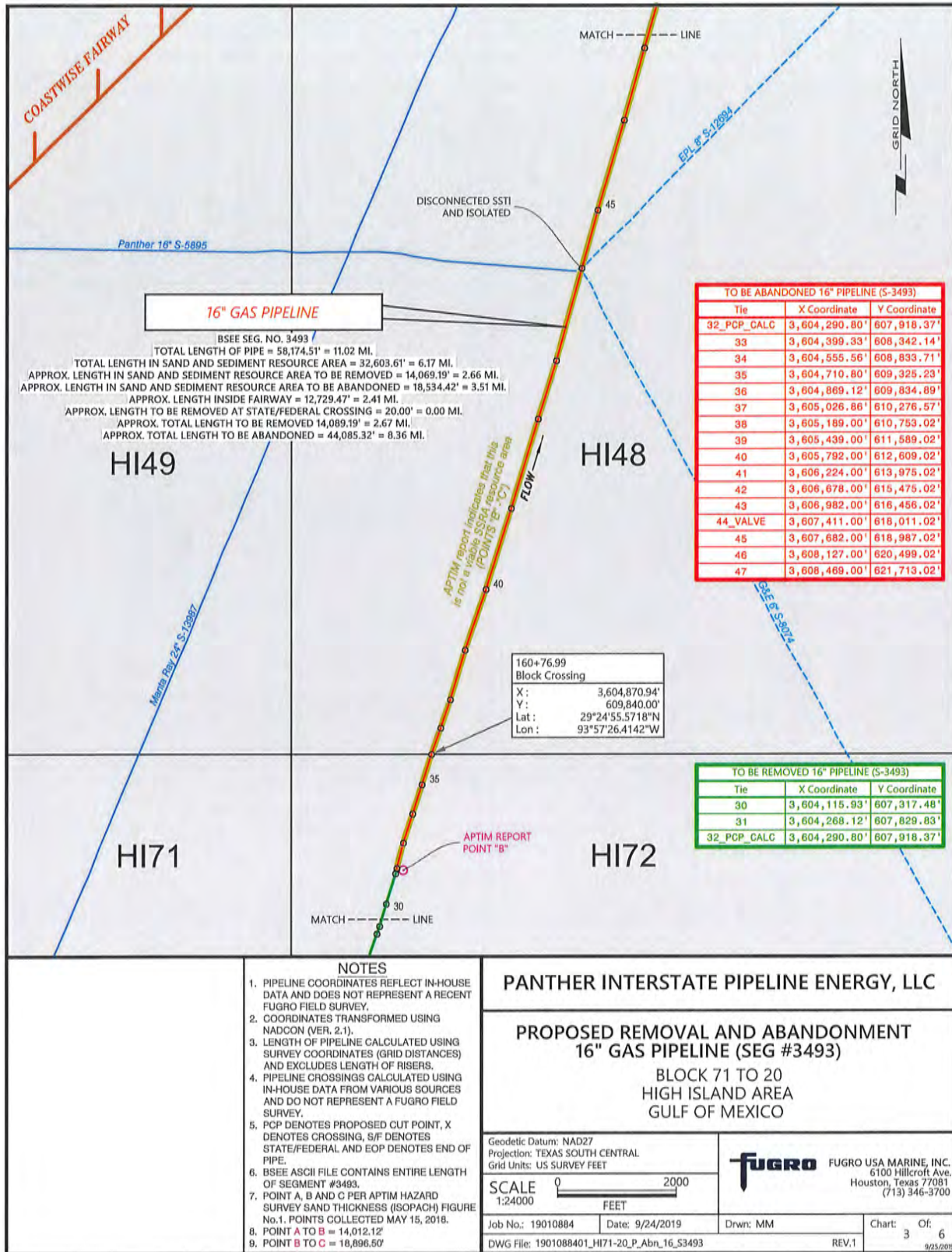
Geodetic Datum: NAD27  
Projection: TEXAS SOUTH CENTRAL  
Grid Units: US SURVEY FEET

SCALE 0 2000  
1:24000  
FEET

Job No: 19010884 Date: 9/24/2019  
DWG File: 1901088401\_HI71-20\_P\_Abn\_16\_S3493

**FUGRO** FUGRO USA MARINE, INC.  
6100 Hillcroft Ave.  
Houston, Texas 77081  
(713) 346-3700

Drwn: MM Chart: 2 Of: 6  
REV.1 9/24/2019



**16" GAS PIPELINE**

BSEE SEG. NO. 3493 /  
 TOTAL LENGTH OF PIPE = 58,174.51' = 11.02 MI.  
 TOTAL LENGTH IN SAND AND SEDIMENT RESOURCE AREA = 32,603.61' = 6.17 MI.  
 APPROX. LENGTH IN SAND AND SEDIMENT RESOURCE AREA TO BE REMOVED = 14,069.19' = 2.66 MI.  
 APPROX. LENGTH IN SAND AND SEDIMENT RESOURCE AREA TO BE ABANDONED = 18,534.42' = 3.51 MI.  
 APPROX. LENGTH INSIDE FAIRWAY = 12,729.47' = 2.41 MI.  
 APPROX. LENGTH TO BE REMOVED AT STATE/FEDERAL CROSSING = 20.00' = 0.00 MI.  
 APPROX. TOTAL LENGTH TO BE REMOVED 14,089.19' = 2.67 MI.  
 APPROX. TOTAL LENGTH TO BE ABANDONED = 44,085.32' = 8.36 MI.

TO BE ABANDONED 16" PIPELINE (S-3493)		
Tie	X Coordinate	Y Coordinate
32_PCP_CALC	3,604,290.80'	607,918.37'
33	3,604,399.33'	608,342.14'
34	3,604,555.56'	608,839.71'
35	3,604,710.80'	609,325.23'
36	3,604,869.12'	609,834.89'
37	3,605,026.86'	610,276.57'
38	3,605,189.00'	610,753.02'
39	3,605,439.00'	611,589.02'
40	3,605,792.00'	612,609.02'
41	3,606,224.00'	613,975.02'
42	3,606,678.00'	615,475.02'
43	3,606,982.00'	616,456.02'
44_VALVE	3,607,411.00'	618,011.02'
45	3,607,682.00'	618,987.02'
46	3,608,127.00'	620,499.02'
47	3,608,469.00'	621,713.02'

TO BE REMOVED 16" PIPELINE (S-3493)		
Tie	X Coordinate	Y Coordinate
30	3,604,115.93'	607,317.48'
31	3,604,268.12'	607,829.83'
32_PCP_CALC	3,604,290.80'	607,918.37'

160+76.99  
 Block Crossing  
 X : 3,604,870.94'  
 Y : 609,840.00'  
 Lat : 29°24'55.5718"N  
 Lon : 93°57'26.4142"W

- NOTES**
- PIPELINE COORDINATES REFLECT IN-HOUSE DATA AND DOES NOT REPRESENT A RECENT FUGRO FIELD SURVEY.
  - COORDINATES TRANSFORMED USING NADCON (VER. 2.1).
  - LENGTH OF PIPELINE CALCULATED USING SURVEY COORDINATES (GRID DISTANCES) AND EXCLUDES LENGTH OF RISERS.
  - PIPELINE CROSSINGS CALCULATED USING IN-HOUSE DATA FROM VARIOUS SOURCES AND DO NOT REPRESENT A FUGRO FIELD SURVEY.
  - PCP DENOTES PROPOSED CUT POINT, X DENOTES CROSSING, S/F DENOTES STATE/FEDERAL AND EOP DENOTES END OF PIPE.
  - BSEE ASCII FILE CONTAINS ENTIRE LENGTH OF SEGMENT #3493.
  - POINT A, B AND C PER APTIM HAZARD SURVEY SAND THICKNESS (ISOPACH) FIGURE No.1. POINTS COLLECTED MAY 15, 2018.
  - POINT A TO B = 14,012.12'
  - POINT B TO C = 18,896.50'

**PANTHER INTERSTATE PIPELINE ENERGY, LLC**

**PROPOSED REMOVAL AND ABANDONMENT  
 16" GAS PIPELINE (SEG #3493)**

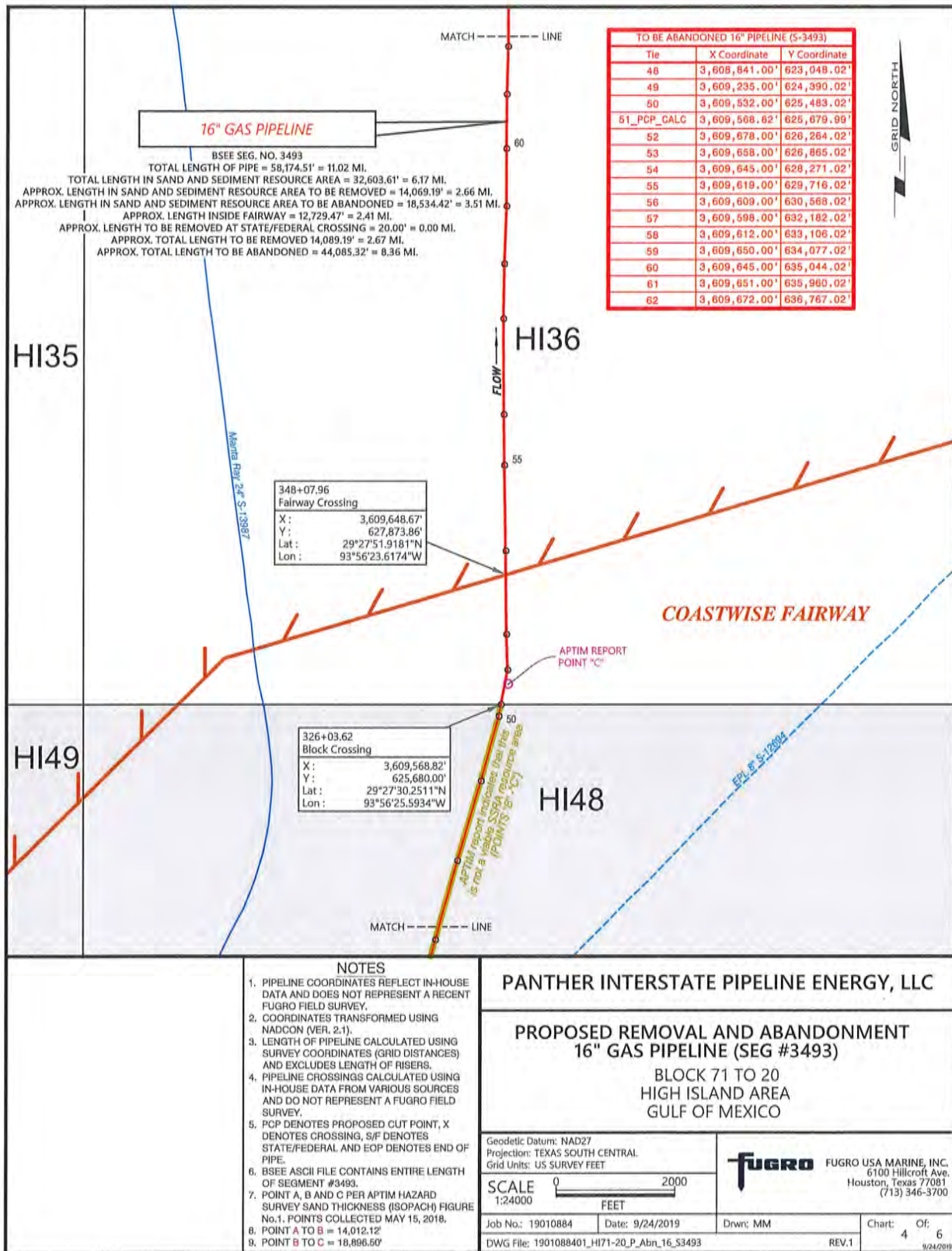
BLOCK 71 TO 20  
 HIGH ISLAND AREA  
 GULF OF MEXICO

Geodetic Datum: NAD27  
 Projection: TEXAS SOUTH CENTRAL  
 Grid Units: US SURVEY FEET

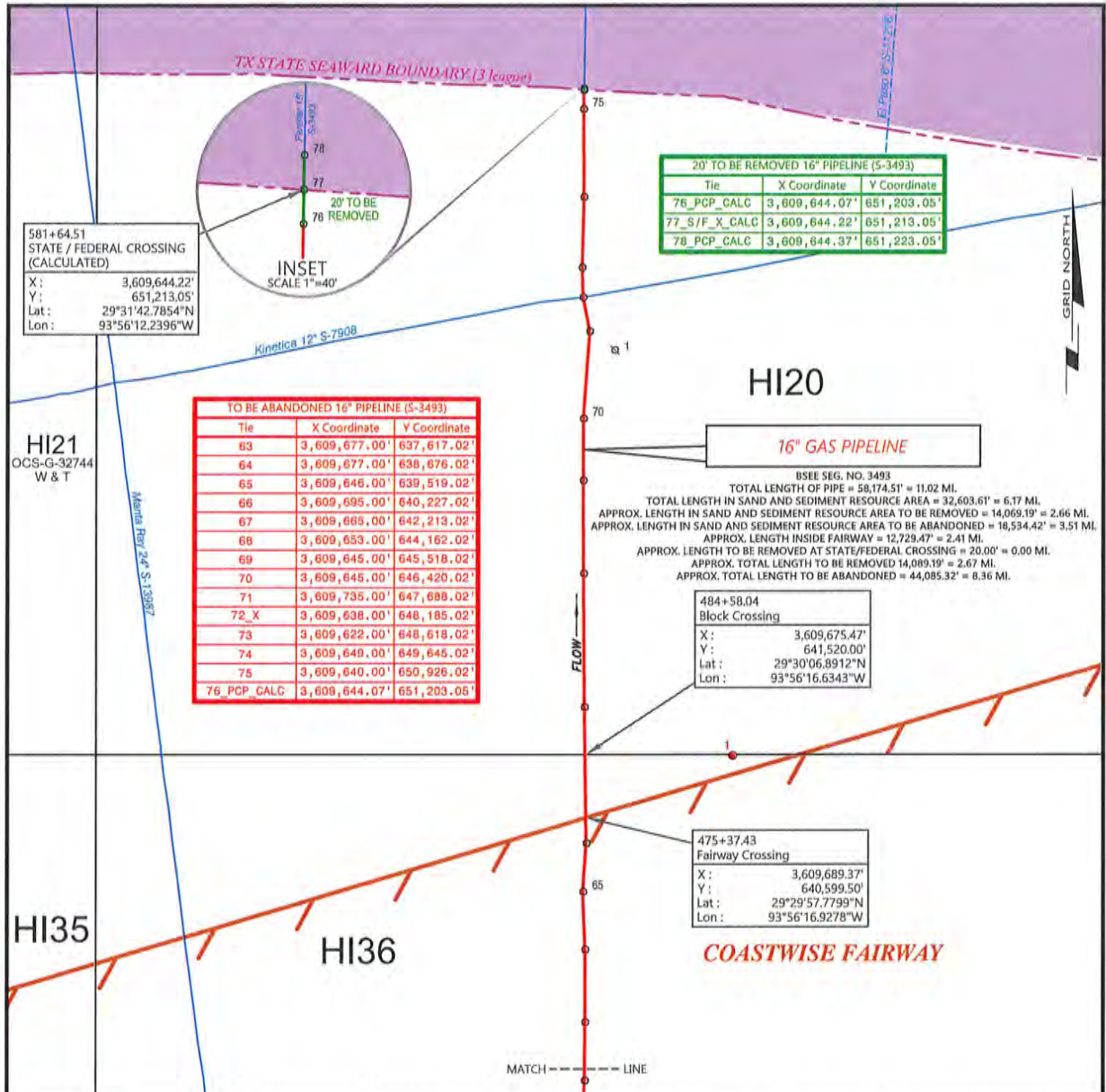
**FUGRO** FUGRO USA MARINE, INC.  
 6100 Hillcroft Ave.  
 Houston, Texas 77081  
 (713) 346-3700

SCALE 1:24000 0 2000 FEET

Job No.: 19010884 Date: 9/24/2019 Drwn: MM Chart: 3 Of: 6  
 DWG File: 1901088401\_HI71-20\_P\_Abn\_16\_S3493 REV.1 9/25/2019

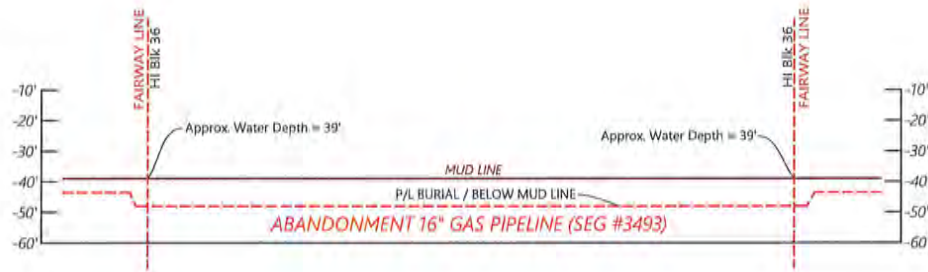


OCT 03 2019

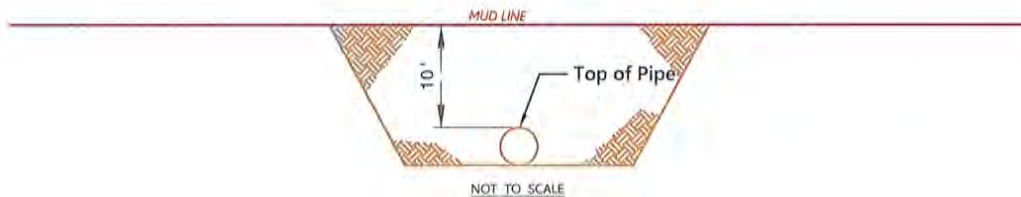


<p><b>NOTES</b></p> <ol style="list-style-type: none"> <li>PIPELINE COORDINATES REFLECT IN-HOUSE DATA AND DOES NOT REPRESENT A RECENT FUGRO FIELD SURVEY.</li> <li>COORDINATES TRANSFORMED USING NADCON (VER. 2.1).</li> <li>LENGTH OF PIPELINE CALCULATED USING SURVEY COORDINATES (GRID DISTANCES) AND EXCLUDES LENGTH OF RISERS.</li> <li>PIPELINE CROSSINGS CALCULATED USING IN-HOUSE DATA FROM VARIOUS SOURCES AND DO NOT REPRESENT A FUGRO FIELD SURVEY.</li> <li>PCP DENOTES PROPOSED CUT POINT, X DENOTES CROSSING, S/F DENOTES STATE/FEDERAL AND EOP DENOTES END OF PIPE.</li> <li>BSEE ASCII FILE CONTAINS ENTIRE LENGTH OF SEGMENT #3493.</li> <li>POINT A, B AND C PER APTIM HAZARD SURVEY SAND THICKNESS (ISOPACH) FIGURE No.1. POINTS COLLECTED MAY 15, 2018.</li> <li>POINT A TO B = 14,012.12'</li> <li>POINT B TO C = 18,896.50'</li> </ol>	<p><b>PANTHER INTERSTATE PIPELINE ENERGY, LLC</b></p> <p><b>PROPOSED REMOVAL AND ABANDONMENT 16" GAS PIPELINE (SEG #3493)</b></p> <p><b>BLOCK 71 TO 20 HIGH ISLAND AREA GULF OF MEXICO</b></p>	
	<p>Geodetic Datum: NAD27 Projection: TEXAS SOUTH CENTRAL Grid Units: US SURVEY FEET</p> <p><b>SCALE</b> 1:24000</p> <p>Job No.: 19010884    Date: 9/24/2019    Drwn: MM    Chart: 5 Of: 6 DWG File: 1901088401_HI71-20_P_Abn_16_S3493    REV.1    9/24/2019</p>	<p><b>fugro</b> FUGRO USA MARINE, INC. 6100 Hillcroft Ave. Houston, Texas 77081 (713) 346-3700</p>





**PROFILE  
ACROSS FAIRWAY**



**CROSS-SECTION  
PIPE CROSSING FAIRWAY**

REFERENCE DRAWING No. OS TX-IS G3 AND OS TX-IS G4, 16" NATURAL GAS PIPELINE AS-BUILT, DATED 1979

**PANTHER INTERSTATE PIPELINE ENERGY, LLC**

**PROPOSED REMOVAL AND ABANDONMENT  
16" GAS PIPELINE (SEG #3493)**

BLOCK 71 TO 20  
HIGH ISLAND AREA  
GULF OF MEXICO

Geodetic Datum: NAD27  
Projection: TEXAS SOUTH CENTRAL  
Grid Units: US SURVEY FEET



FUGRO USA MARINE, INC.  
6100 Hillcroft Ave.  
Houston, Texas 77081  
(713) 346-3700

SCALE AS SHOWN

Job No.: 19010884

Date: 9/24/2019

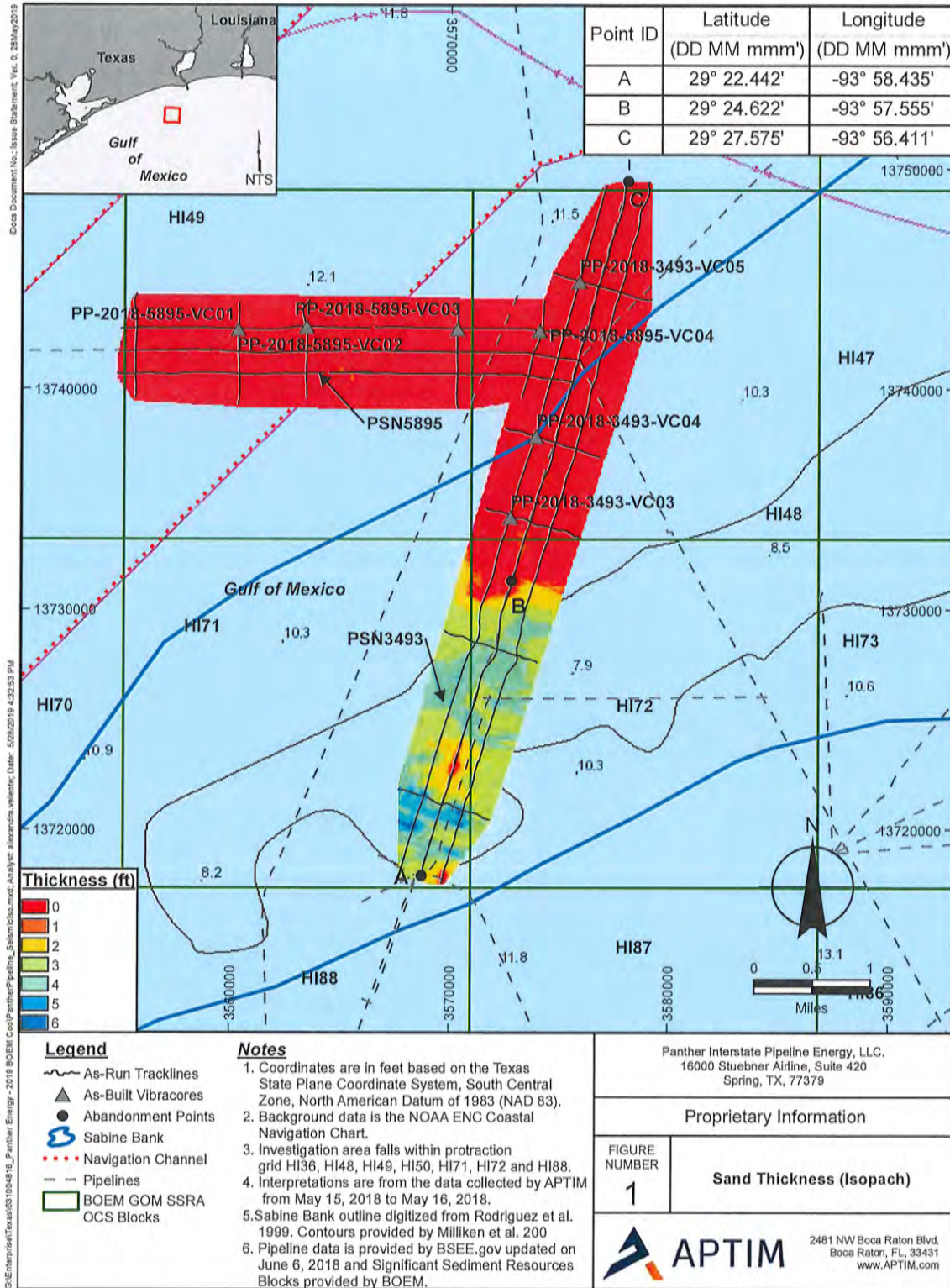
Dwnr: MM

Chart: 6 Of: 6

DWG File: 1901088401\_HI71-20\_P\_Abn\_16\_S3493

REV.1

9/24/2019



OCT 03 2019

